



***Y PWYLLGOR
CYNLLUNIO***

11 GORFFENNAF 2017

RHANBARTH Y DE

**PLANNING
COMMITTEE**

11 JULY 2017

AREA SOUTH



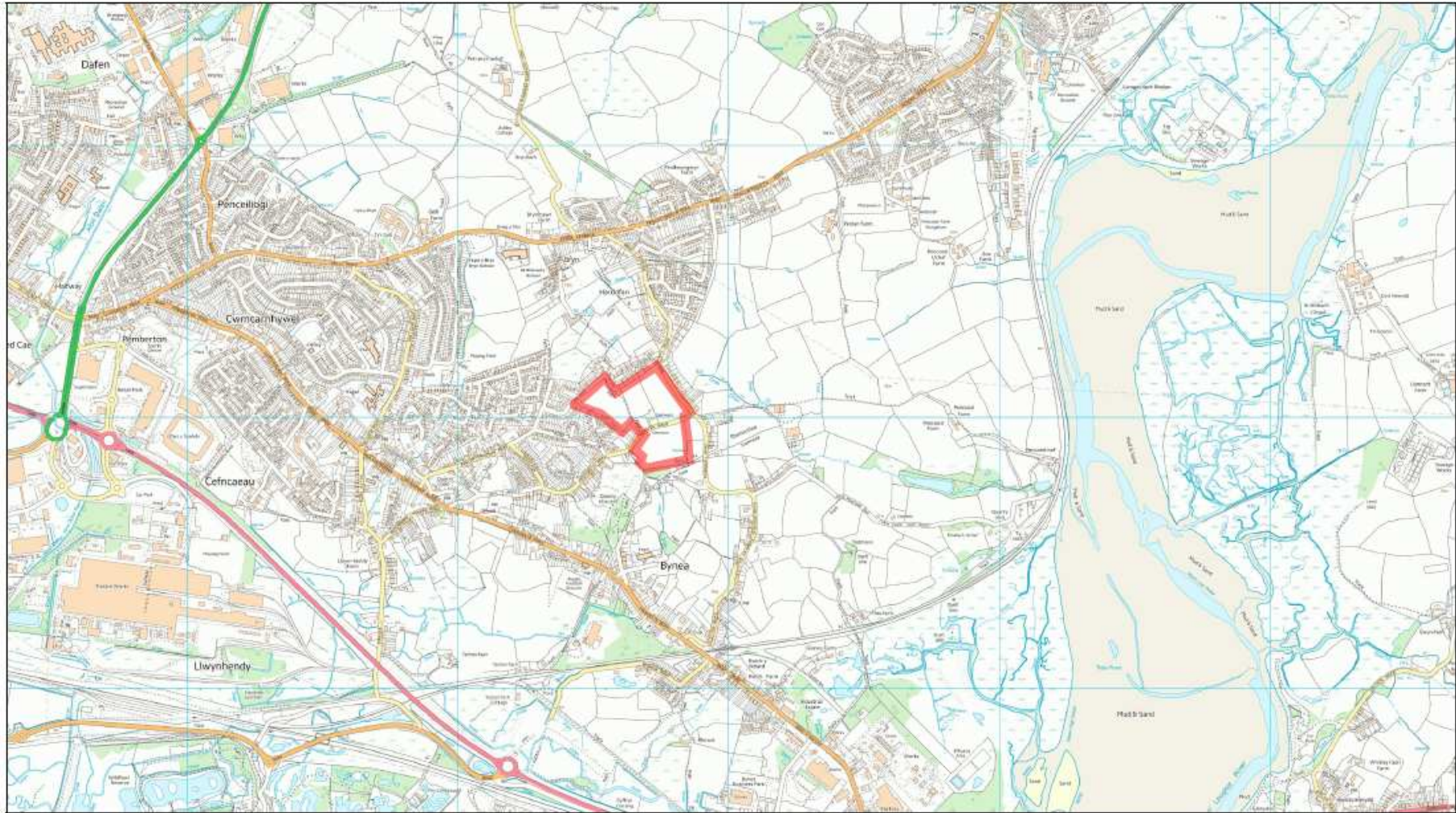
***CEISIADAU YR ARGYMHELLIR EU
BOD YN CAEL EU CYMERADWYO***

**APPLICATIONS RECOMMENDED
FOR APPROVAL**



S/33342

S/33342



S/33342



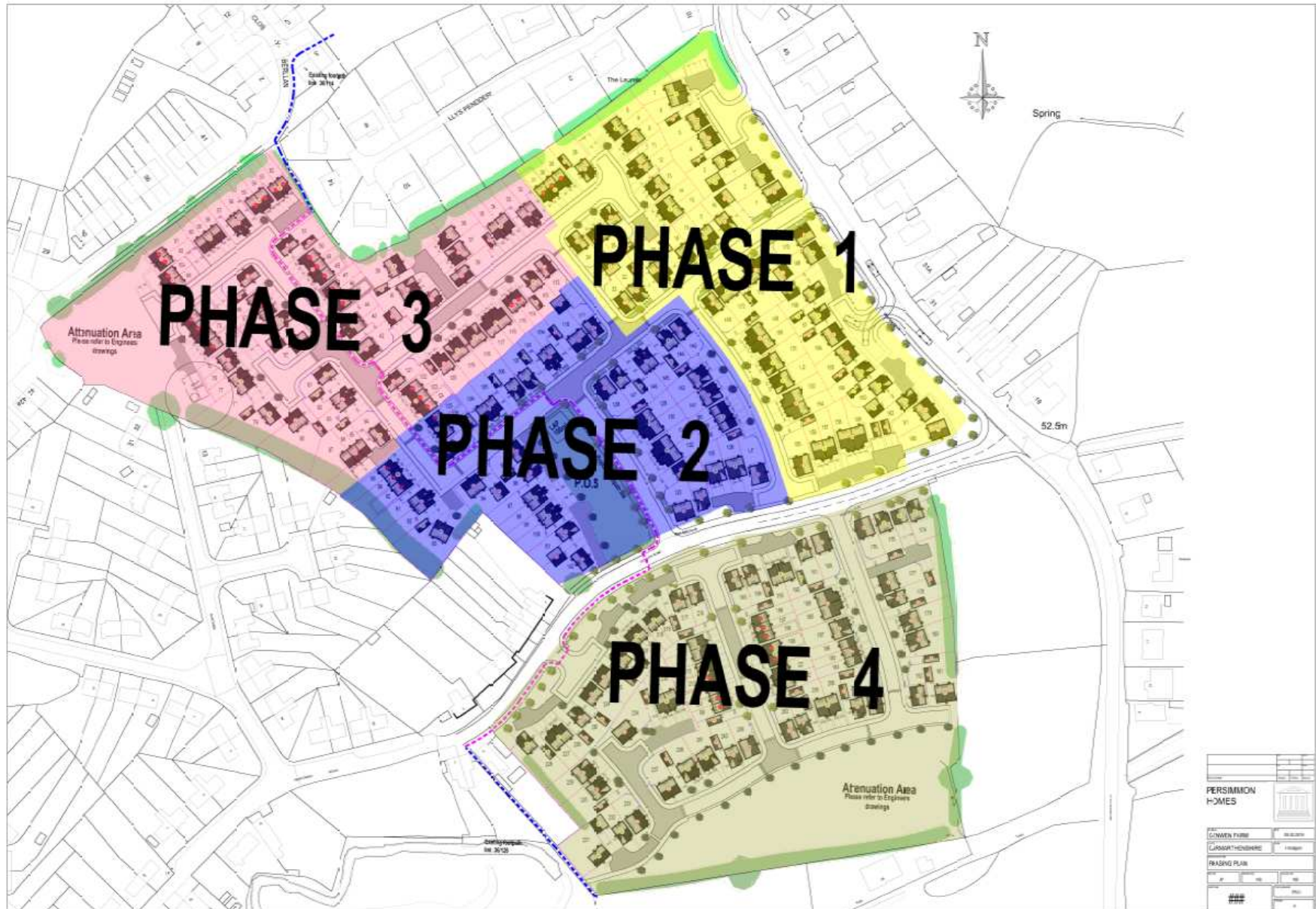
S/33342



S/33342



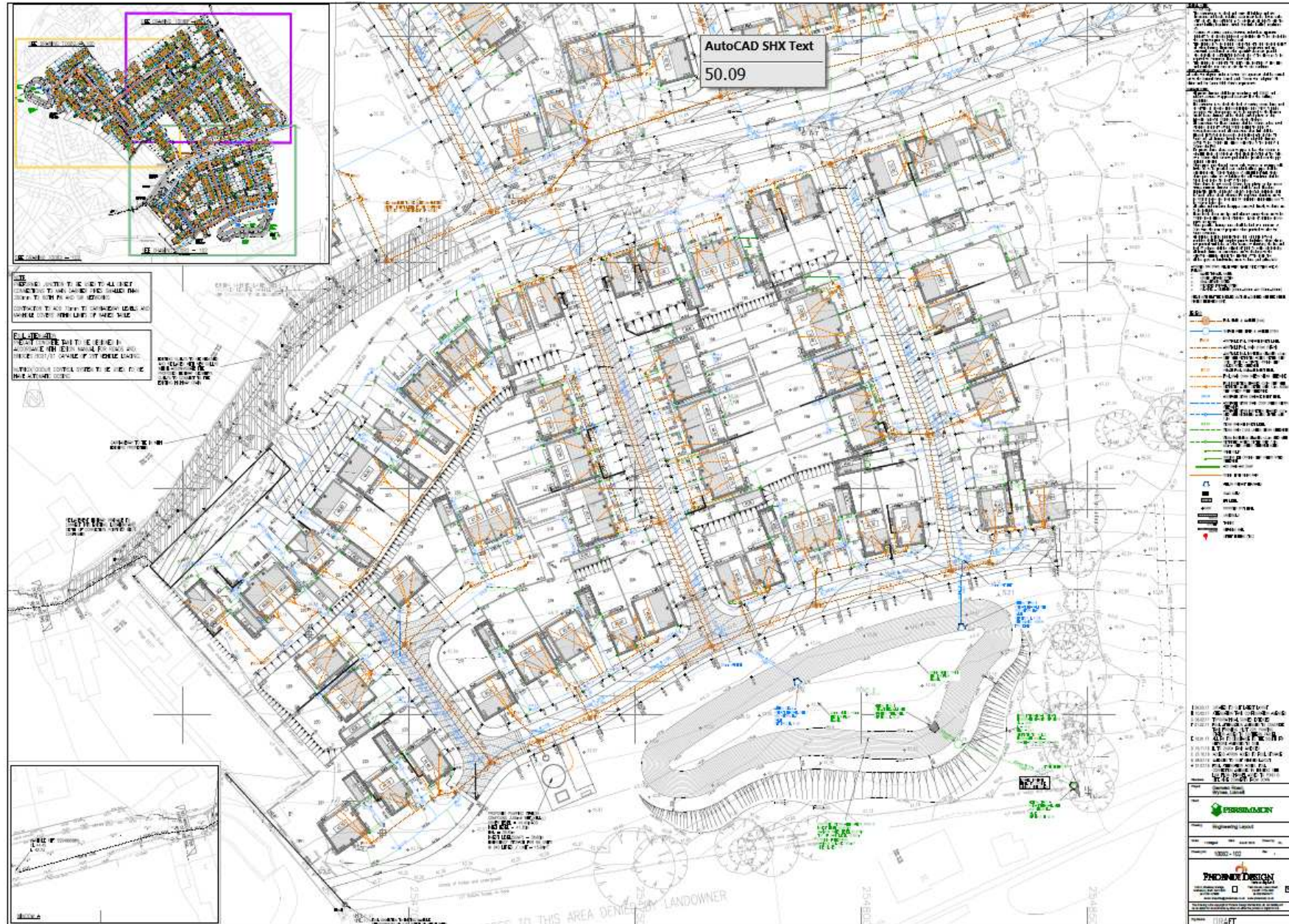
S/33342



S/33342



S/33342



S/33342



SOFT LANDSCAPE KEY

- EXISTING TREES/SHRUBS TO BE RETAINED
- PROPOSED NATIVE TREE PLANTING (Refer to plant schedule for species details)
- PROPOSED ORNAMENTAL TREE PLANTING (Refer to plant schedule for species details)
- PROPOSED HEDGELOW PLANTING (Refer to plant schedule for species details)
- PROPOSED SHIELD PLANTING (Refer to plant schedule for species details)
- PROPOSED GRASS SEEDING (Areas to be seeded with Grasses/Seeds (L.I. Mix))
- PROPOSED WILDOFLOWER SEEDING (Areas to be seeded with Wildflower Seeds (SWP Mix))
- PROPOSED MULTIFLOUNDER SEEDING (Areas to be seeded with Grasses/Seeds (CM Mix))
- PROPOSED GRASS TUFF (Areas to be seeded with Grasses/Seeds (CM Mix))
- PROPOSED MULTIFLOUNDER PLANTING (Refer to plant schedule for species details)
- PROPOSED ATTENTION FENCE (For details refer to Project Conditions/Notes/11.11.16)
- PROPOSED SHIELD WOODLAND BUFFER (Refer to plant schedule for species details)

PLANT SCHEDULES

NATIVE TREE PLANTING

| GROUP | TYPE | SPECIES | HEIGHT | SPACING | NOTES |
|-------|------|---------------|--------|-----------|-------|
| T1 | Tree | Live Oak | 12-15' | 15' x 15' | |
| | | Shoebill | 12-15' | 15' x 15' | |
| | | Black Gum | 12-15' | 15' x 15' | |
| | | Water Hickory | 12-15' | 15' x 15' | |
| T2 | Tree | Live Oak | 12-15' | 15' x 15' | |
| | | Shoebill | 12-15' | 15' x 15' | |
| | | Black Gum | 12-15' | 15' x 15' | |
| | | Water Hickory | 12-15' | 15' x 15' | |

ORNAMENTAL TREE PLANTING

| GROUP | TYPE | SPECIES | HEIGHT | SPACING | NOTES |
|-------|------|---------------|--------|-----------|-------|
| O1 | Tree | Live Oak | 12-15' | 15' x 15' | |
| | | Shoebill | 12-15' | 15' x 15' | |
| | | Black Gum | 12-15' | 15' x 15' | |
| | | Water Hickory | 12-15' | 15' x 15' | |
| O2 | Tree | Live Oak | 12-15' | 15' x 15' | |
| | | Shoebill | 12-15' | 15' x 15' | |
| | | Black Gum | 12-15' | 15' x 15' | |
| | | Water Hickory | 12-15' | 15' x 15' | |

NATIVE HEDGELOW PLANTING

| GROUP | TYPE | SPECIES | HEIGHT | SPACING | NOTES |
|-------|-------|---------------|--------|-----------|-------|
| H1 | Hedge | Live Oak | 12-15' | 15' x 15' | |
| | | Shoebill | 12-15' | 15' x 15' | |
| | | Black Gum | 12-15' | 15' x 15' | |
| | | Water Hickory | 12-15' | 15' x 15' | |
| H2 | Hedge | Live Oak | 12-15' | 15' x 15' | |
| | | Shoebill | 12-15' | 15' x 15' | |
| | | Black Gum | 12-15' | 15' x 15' | |
| | | Water Hickory | 12-15' | 15' x 15' | |

ORNAMENTAL HEDGELOW PLANTING

| GROUP | TYPE | SPECIES | HEIGHT | SPACING | NOTES |
|-------|-------|---------------|--------|-----------|-------|
| O3 | Hedge | Live Oak | 12-15' | 15' x 15' | |
| | | Shoebill | 12-15' | 15' x 15' | |
| | | Black Gum | 12-15' | 15' x 15' | |
| | | Water Hickory | 12-15' | 15' x 15' | |
| O4 | Hedge | Live Oak | 12-15' | 15' x 15' | |
| | | Shoebill | 12-15' | 15' x 15' | |
| | | Black Gum | 12-15' | 15' x 15' | |
| | | Water Hickory | 12-15' | 15' x 15' | |

SHIELD PLANTING

| GROUP | TYPE | SPECIES | HEIGHT | SPACING | NOTES |
|-------|--------|---------------|--------|-----------|-------|
| S1 | Shield | Live Oak | 12-15' | 15' x 15' | |
| | | Shoebill | 12-15' | 15' x 15' | |
| | | Black Gum | 12-15' | 15' x 15' | |
| | | Water Hickory | 12-15' | 15' x 15' | |
| S2 | Shield | Live Oak | 12-15' | 15' x 15' | |
| | | Shoebill | 12-15' | 15' x 15' | |
| | | Black Gum | 12-15' | 15' x 15' | |
| | | Water Hickory | 12-15' | 15' x 15' | |

SHIELD WOODLAND BUFFER

| GROUP | TYPE | SPECIES | HEIGHT | SPACING | NOTES |
|-------|--------|---------------|--------|-----------|-------|
| WB1 | Buffer | Live Oak | 12-15' | 15' x 15' | |
| | | Shoebill | 12-15' | 15' x 15' | |
| | | Black Gum | 12-15' | 15' x 15' | |
| | | Water Hickory | 12-15' | 15' x 15' | |
| WB2 | Buffer | Live Oak | 12-15' | 15' x 15' | |
| | | Shoebill | 12-15' | 15' x 15' | |
| | | Black Gum | 12-15' | 15' x 15' | |
| | | Water Hickory | 12-15' | 15' x 15' | |

SHIELD PLANTING

| GROUP | TYPE | SPECIES | HEIGHT | SPACING | NOTES |
|-------|--------|---------------|--------|-----------|-------|
| S3 | Shield | Live Oak | 12-15' | 15' x 15' | |
| | | Shoebill | 12-15' | 15' x 15' | |
| | | Black Gum | 12-15' | 15' x 15' | |
| | | Water Hickory | 12-15' | 15' x 15' | |
| S4 | Shield | Live Oak | 12-15' | 15' x 15' | |
| | | Shoebill | 12-15' | 15' x 15' | |
| | | Black Gum | 12-15' | 15' x 15' | |
| | | Water Hickory | 12-15' | 15' x 15' | |

NOTES

Proposed native responses to be planted by 12th April 2016 and all trees to be planted by 12th April 2016.

| | | |
|---------------|---------------------------------------|-------------|
| D | Pump station added to drawing | AMP 19/6/17 |
| C | Drainage amended to accommodate | AMP 25/6/17 |
| B | Access points to accommodate attached | AMP 30/3/17 |
| A | Drainage amended to accommodate | AMP 02/2/17 |
| DEL | DRAMA STUDIO LANDSCAPE | |
| SCALE | 1:500 (SEE PLAN) | |
| DATE | JAN 2016 | |
| PROJECT | GENEVEN FARM | |
| DRAWING TITLE | DETAILED SOFT LANDSCAPE PROPOSALS | |



S/33342



S/33342



S/33342



PERSIMMON
HOMES



| | |
|-------------------------------|---------------|
| 932 | |
| Souter (Village) | 240413 |
| SL-WD16 | 808@A1 100@A3 |
| Plans & Elevations (Planning) | |
| | Rev 6 |

S/33342



S/33342



Rev:
**PERSIMMON
 HOMES**



| | |
|---------------------------------------|---------------|
| 835 sqft | |
| 835-WHQS | June 2014 |
| 835-WHQS-WD04 | 80@A1, 100@A3 |
| Plans Elevations & Section (Planning) | |
| | Rev: - |

S/33342



S/33342



S/33342



S/33342



S/33342



S/33342



S/33342



S/33342



S/33342



S/33342



S/33342



S/33342



S/33342



S/33342



S/33342



S/33342



S/33342



S/33342



S/33342



S/33342



S/33342



S/33342



S/33342



S/33342



S/33342



S/33342

